

Welders and Pipefitters
Agree, the Main Thing
They Like About Our New
CNC Saddle Machines...

“They are
REALLY Easy
to Use”

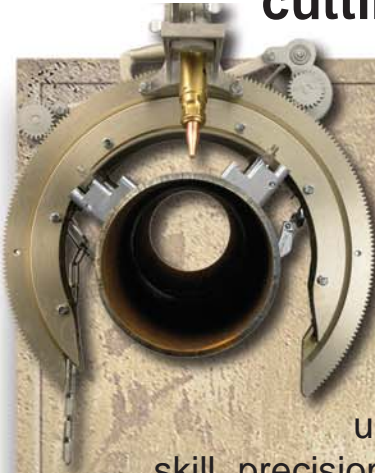


**MATHEY
DEARMAN**

Smarter. Tougher. **Mathey.**

4344 S Maybelle Ave | Tulsa, Oklahoma 74107 | Phone: 918.447.1288 | E-Mail: sales@mathey.com

We've taken the industry's most trusted pipe cutting machines and made them...well, smarter.



Our new ground-breaking saddle machines place CNC accuracy into the hands of field welders giving them an unmatched level of skill, precision and productivity.

- Our three models work on a range of pipe diameters from 1½" to 12"
- Compact design and lightweight high-strength aluminum construction
- Easily installed and operated by one person
- Low current-draw electrical system can be powered from any common 15 AMP, 115 or 230 volt outlet
- Create precision shapes in minutes not hours
- One machine replaces literally thousands of saddle templates, contour templates or paper patterns
- Dramatically speeds cutting and reduces or eliminates grinding
- Trial and error manual fit-up is a thing of the past along with its wasted time and materials
- Complete field portability



MSA
1½" to 4"
O.D. Pipe



1SA
3" to 8"
O.D. Pipe



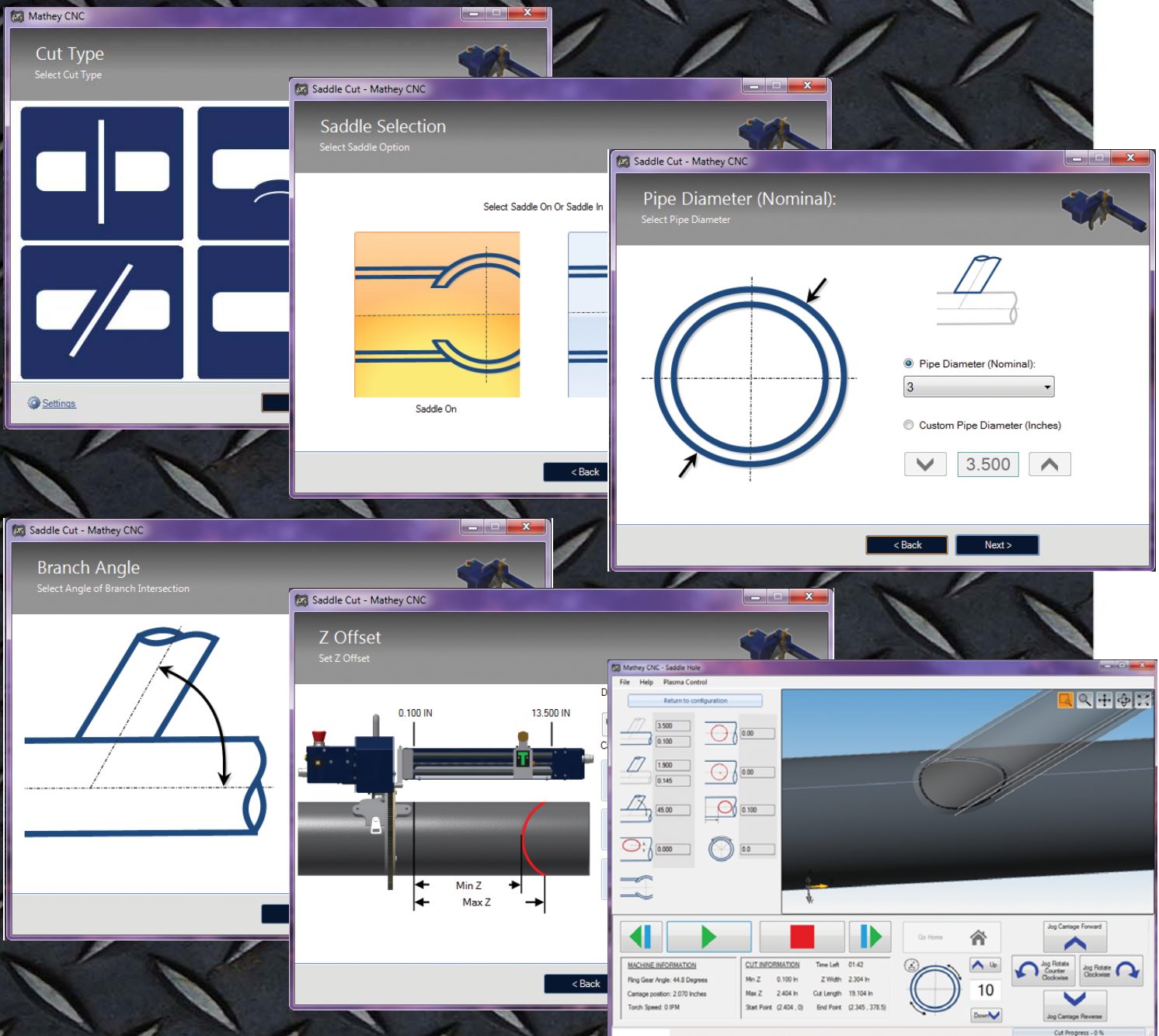
2SA
6" to 12"
O.D. Pipe



Innovative pipefitter-friendly software interface:

Step-by-step software gives you complete control

- Operates on a common laptop computer running Windows XP, or later, operating system
- The computer interface is designed for pipefitters not programmers
- Intuitive software with a short learning curve
- Complete speed and position control during the cutting process
- Plasma torch ignition and stop control with the press of a button



Machine	Nominal Sizes (NPS)	Custom Range (Pipe OD)
MSA	1-½, 2, 2-½, 3, 3-½, 4	1.9"- 4.5"
1SA	3, 3-½, 4, 5, 6, 8	3.5"- 8.625"
2SA	6, 8, 10, 12	6.625"- 12.75"

Product	Part Number
MSA CNC 1½" - 4"	03.0117.MSA
1SA CNC 3" - 8"	03.0117.1SA
2SA CNC 6" - 12"	03.0117.2SA
3 Machine Package (MSA-1SA-2SA)	03.0117.SET
Software Only	03.0117.000

Part Number	Actual Machine Weight	Shipping Information			
		Weight	Length	Width	Height
03.0117.MSA	36 lbs.	85 lbs.	31"	27"	21"
03.0117.1SA	43 lbs.	90 lbs.			
03.0117.2SA	52 lbs.	100 lbs.			

Model	NPS	OD (in)	Available Travel Length (in)	Axial Cut Distance (in)	Max. Allowable Miter Cut Angle (Deg.)
MSA 1SA 2SA	1½	1.9	14	13.52	82
	2	2.375		13.47	80
	2½	2.875		13.53	78
	3	3.5		13.06	75
	3½	4		13.95	74
	4	4.5		13.85	72
	5	5.563		13.77	68
	6	6.625		13.58	64
	8	8.625		13.80	58
	10	10.75		13.76	52
	12	12.75		13.67	47

Header Axial Distance (in) when header NPS is 12

Cut Angle (degrees)		Branch NPS														
		½	¾	1	1¼	1½	2	2½	3	3½	4	5	6	8	10	12
	90 (T-Cut)	0.84	1.05	1.32	1.66	1.90	2.38	2.88	3.50	4.00	4.50	5.56	6.63	8.63	10.75	12.75
	85	0.84	1.05	1.32	1.67	1.91	2.38	2.89	3.51	4.02	4.52	5.58	6.65	8.66	10.79	12.80
	80	0.85	1.07	1.34	1.69	1.93	2.41	2.92	3.55	4.06	4.57	5.65	6.73	8.76	10.92	12.95
	75	0.87	1.09	1.36	1.72	1.97	2.46	2.98	3.62	4.14	4.66	5.76	6.86	8.93	11.13	13.20
	70	0.89	1.12	1.40	1.77	2.02	2.53	3.06	3.72	4.26	4.79	5.92	7.05	9.18	11.44	13.57
	65	0.93	1.16	1.45	1.83	2.10	2.62	3.17	3.86	4.41	4.97	6.14	7.31	9.52	11.86	NA
	60	0.97	1.21	1.52	1.92	2.19	2.74	3.32	4.04	4.62	5.20	6.42	7.65	9.96	12.41	NA
	55	1.03	1.28	1.61	2.03	2.32	2.90	3.51	4.27	4.88	5.49	6.79	8.09	10.53	13.12	NA
	50	1.10	1.37	1.72	2.17	2.48	3.10	3.75	4.57	5.22	5.87	7.26	8.65	11.26	NA	NA
	45	1.19	1.48	1.86	2.35	2.69	3.36	4.07	4.95	5.66	6.36	7.87	9.37	12.20	NA	NA

Branch Axial Distance (in) when header NPS is 12

Cut Angle (degrees)		Branch NPS														
		½	¾	1	1¼	1½	2	2½	3	3½	4	5	6	8	10	12
	90 (T-Cut)	0.01	0.02	0.03	0.05	0.07	0.11	0.16	0.24	0.32	0.41	0.64	0.93	1.68	2.95	6.38
	85	0.07	0.09	0.12	0.15	0.18	0.24	0.31	0.42	0.52	0.63	0.91	1.24	2.08	3.44	6.96
	80	0.15	0.19	0.23	0.29	0.34	0.42	0.52	0.65	0.77	0.91	1.23	1.61	2.54	3.99	7.60
	75	0.23	0.28	0.35	0.44	0.51	0.64	0.77	0.94	1.08	1.24	1.61	2.04	3.06	4.61	8.31
	70	0.31	0.38	0.48	0.60	0.69	0.86	1.05	1.27	1.46	1.64	2.06	2.54	3.66	5.31	9.10
	65	0.39	0.49	0.61	0.77	0.89	1.11	1.34	1.63	1.87	2.10	2.59	3.13	4.35	6.11	10.01
	60	0.48	0.61	0.76	0.96	1.10	1.37	1.66	2.02	2.31	2.60	3.21	3.83	5.16	7.04	11.04
	55	0.59	0.74	0.92	1.16	1.33	1.66	2.01	2.45	2.80	3.15	3.90	4.64	6.11	8.12	12.25
	50	0.70	0.88	1.10	1.39	1.59	1.99	2.41	2.94	3.36	3.78	4.67	5.56	7.25	9.40	13.67
	45	0.84	1.05	1.32	1.66	1.90	2.38	2.88	3.50	4.00	4.50	5.56	6.63	8.63	10.96	NA

Host Computer Requirements

Parameter	Requirement
USB Port Protocol	USB 2.0 or Higher
Operating System	Windows XP or Higher
Software	Mathey CNC Software
Software Drivers	ARCUS Drivers and Tools

Electrical Properties

Parameter	Minimum	Maximum	Units
AC Voltage In (110 range/220 range)	90/180	132/264	Vac
Operating Temperature (Low Current)	0	70	°C
Operating Temperature (High Current)	0	50	°C
Storage Temperature	-20	85	°C
Storage Humidity (non-condensing)	5	95	%
Operating Humidity (non-condensing)	55	85	%
Vibration (± 7.35 M/(SxS) on X, Y and Z Axis)	5	50	Hz

Distributed By:



4344 South Maybelle Ave.
Tulsa, Oklahoma 74107
Phone: 918.447.1288
Fax: 918.447.0188
sales@mathey.com
www.matheycnc.com